

July 19 1905

Precisary lines Lincoln Ave

Pincock Lane to 27th St

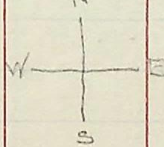
Q.P. Int

A.D.C. Rod

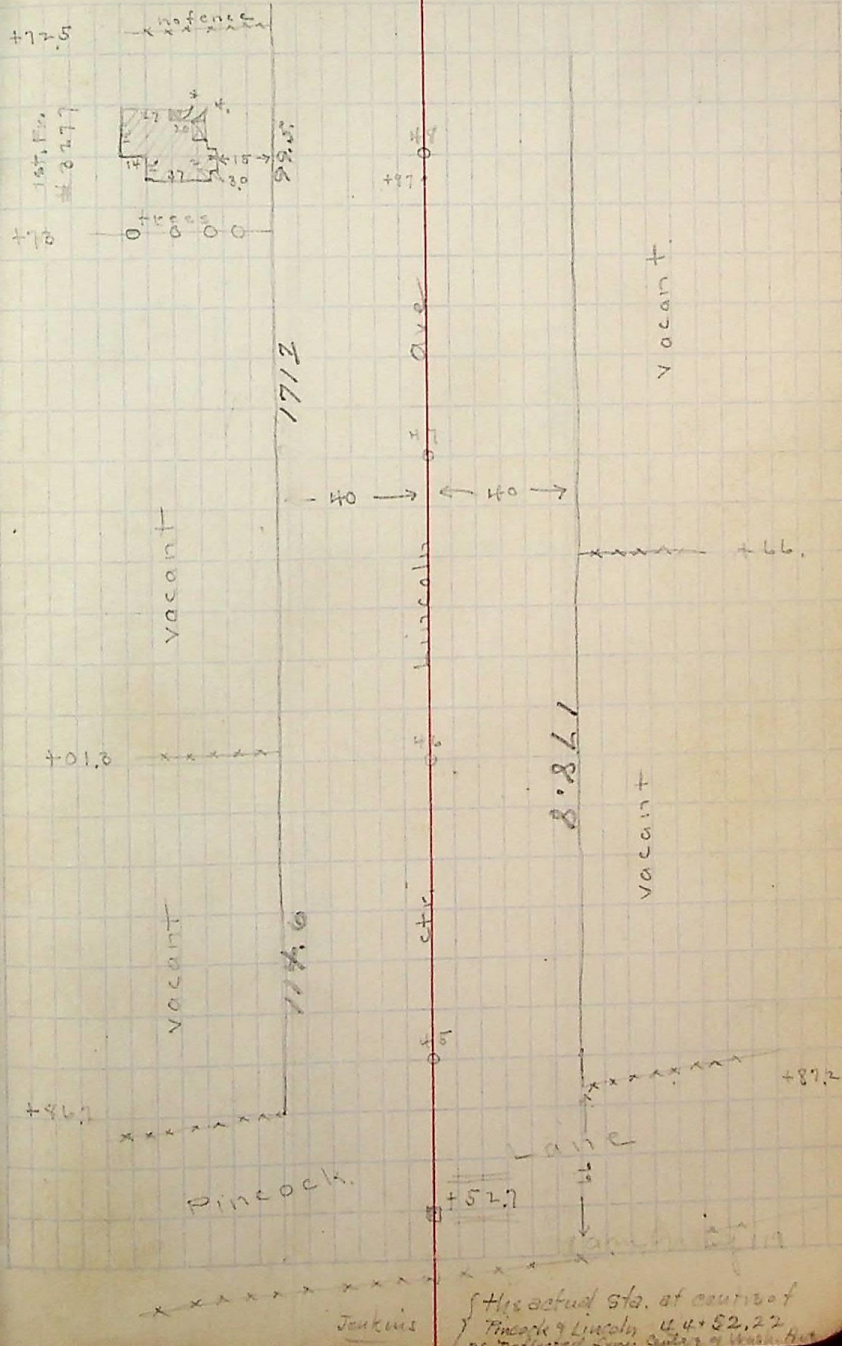
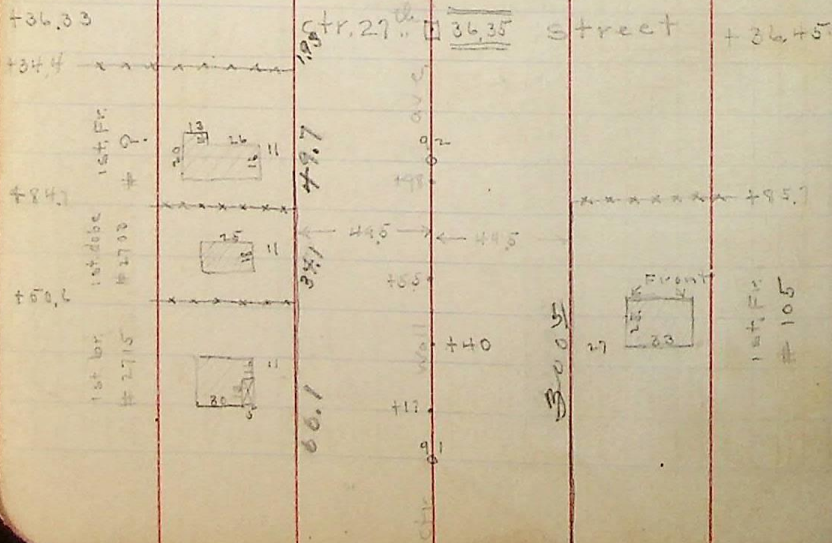
H.B.L. chain

from 10 to 5 P.M. May 19.
4 P.M. to 5 P.M. " 22

2



11 A.M. May 27th 1905



{ His actual sta. at center of
Pincock & Lincoln 44+52.22
as reflected from center of Wall. Act